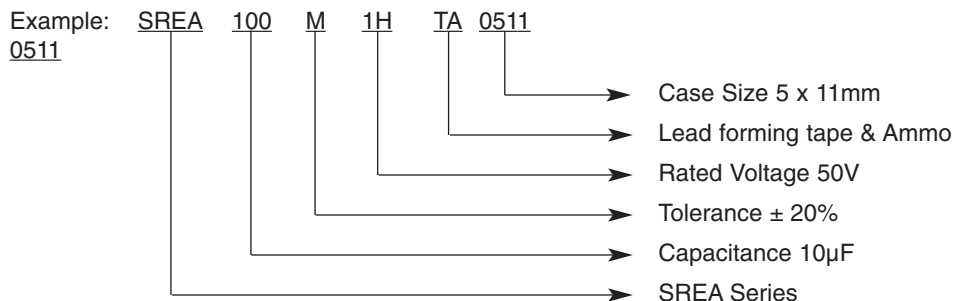




LEADED ALUMINUM ELECTROLYTIC CAPACITORS PART NUMBERING SYSTEM



(1) Series:

Series is represented by a two or three digit code. If there are 2 digits only for series code, keep blank on the third digit.

(2) Capacitance:

Rated capacitance in µF is represented by a three digit number. The first two digits are the significant figures of the nominal capacitance and the third digit indicates the number of zeros following these figures. The decimal point is represented by the capital letter R. Please refer to the following example:

µF	0.1	0.47	1	4.7	10	47	100	470	1000	4700	10000
Part Number	0R1	R47	010	4R7	100	470	101	471	102	472	103

(3) Tolerance:

Symbol of W, T, Q, V, M, K and J show special capacitance tolerance which are listed as follows:

W=-10%~+100%	M=-20%~+20%
T=-10%~+50%	K=-10%~+10%
Q=-10%~+30%	J=-5%~+5%
V=-10%~+20%	

(4) Rated Voltage:

Voltage on volts(V) is represented by two digit code showing the real working voltage indicated as follows:

Voltage (WV)	4	6.3	10	16	25	35	40	50	63	80	100	160	200	250	350	400	450
Code	OG	OJ	1A	IC	1E	1V	1G	1H	1J	1K	2A	2C	2D	2E	2V	2G	2W

(5) Lead Forming and Package:

The terminal processing and package method represented by two capital letters. Please specify as indicated, referring to the following signs:

FF = Lead Forming & Loose Package	TA = Lead Forming Tape & Ammo Package
CC = Lead Cutting & Loose Package	TR = Lead Forming Tape & Reel package
FC = Lead Forming & Cutting & Loose Package	SA = Straight Lead Tape & Ammo Package
SC = Snap-in & Cutting & Loose Package	SR = Straight Lead Tape & Reel Package
SF = Snap-in & Forming Cutting & Loose Package	

* If there is none, can be omitted or written in “-”

(6) Case Size:

The first two digits indicate case diameter in mm. The last two digits indicate case length in mm.