



ALUMINUM ELECTROLYTIC TAPING SPECIFICATION FOR RADIAL LEAD TYPE

FIGURE 1

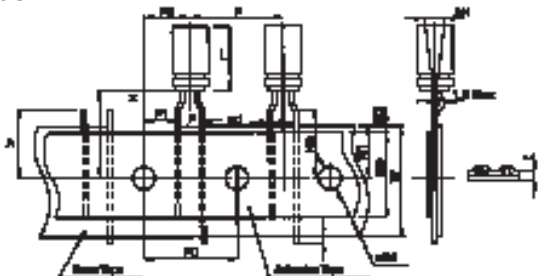


FIGURE 2

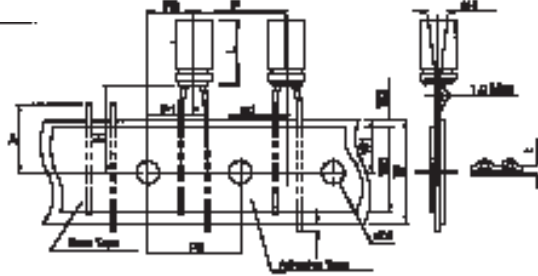


FIGURE 3

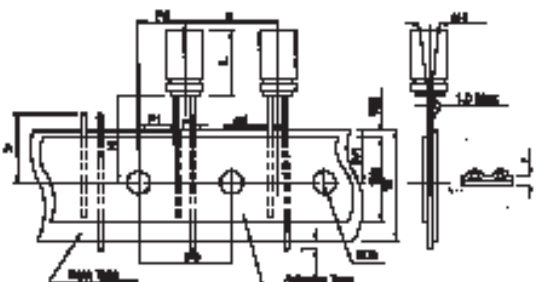
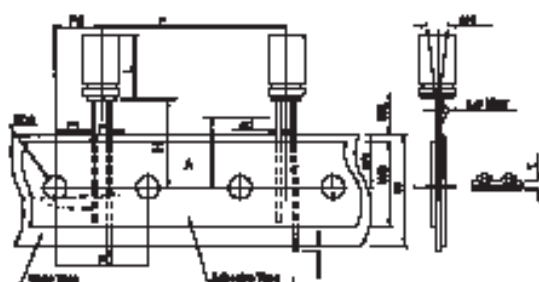


FIGURE 4



Symbol	TA, TR									SA, SR										
	L≤7mm					L>7mm				L≤7mm					L>7mm					
	ø3	ø4	ø5	ø6.3	ø8	ø5	ø6.3	ø8	ø3	ø4	ø5	ø6.3	ø8	ø5	ø6.3	ø8	Tol.	ø10	ø13	Tol.
ød	0.4	0.45	0.5	0.5	0.5	0.5	0.5	0.5	0.4	0.45	0.5	0.5	0.5	0.5	0.5	0.5	±0.05	0.6	0.6	±0.05
P	12.7	12.7	12.7	12.7	12.7	12.7	12.7	12.7	12.7	12.7	12.7	12.7	12.7	12.7	12.7	12.7	±1.0	12.7	25.4	±1.0
P0	12.7	12.7	12.7	12.7	12.7	12.7	12.7	12.7	12.7	12.7	12.7	12.7	12.7	12.7	12.7	12.7	±0.2	12.7	12.7	±0.3
P2	6.35	6.35	6.35	6.35	6.35	6.35	6.35	6.35	6.35	6.35	6.35	6.35	6.35	6.35	6.35	6.35	±1.0	6.35	6.35	±1.3
P1	3.85	3.85	3.85	3.85	3.85	3.85	3.85	3.85	5.1	5.1	5.1	5.1	4.6	5.1	5.1	4.6	±0.5	3.85	3.85	±0.7
F	5.0	5.0	5.0	5.0	5.0	5.0	5.0	5.0	2.5	2.5	2.5	2.5	3.5	2.5	2.5	3.5	-0.2/+0.8	5.0	5.0	-0.2/+0.8
H	17.5	17.5	17.5	17.5	17.5	18.5	18.5	20.0	17.5	17.5	17.5	17.5	17.5	18.5	18.5	18.5	±0.75	18.5	18.5	±0.75
H0	16.0	16.0	16.0	16.0	16.0	16.0	16.0	16.0	-	-	-	-	-	-	-	-	±0.5	-	-	±0.5
W	18.0	18.0	18.0	18.0	18.0	18.0	18.0	18.0	18.0	18.0	18.0	18.0	18.0	18.0	18.0	18.0	±0.5	18.0	18.0	±0.5
W0	12.0	12.0	12.0	12.0	12.0	12.0	12.0	12.0	12.0	12.0	12.0	12.0	12.0	12.0	12.0	12.0	Min	12.0	12.0	Min
W1	9.0	9.0	9.0	9.0	9.0	9.0	9.0	9.0	9.0	9.0	9.0	9.0	9.0	9.0	9.0	9.0	±0.5	9.0	9.0	±0.5
W2	1.5	1.5	1.5	1.5	1.5	1.5	1.5	1.5	1.5	1.5	1.5	1.5	1.5	1.5	1.5	1.5	Max	1.5	1.5	Max
øD0	4.0	4.0	4.0	4.0	4.0	4.0	4.0	4.0	4.0	4.0	4.0	4.0	4.0	4.0	4.0	4.0	±0.2	4.0	4.0	±0.2
t	0.7	0.7	0.7	0.7	0.7	0.7	0.7	0.7	0.7	0.7	0.7	0.7	0.7	0.7	0.7	0.7	±0.2	0.7	0.7	±0.2
ΔH	0	0	0	0	0	0	0	0	0	0	0	0	0	0	0	0	±1.0	0	0	±1.0
1	1.0	1.0	1.0	1.0	1.0	1.0	1.0	1.0	1.0	1.0	1.0	1.0	1.0	1.0	1.0	1.0	Max	1.0	1.0	Max
A	11	11	11	11	11	11	11	11	11	11	11	11	11	11	11	11	Max	11	11	Max
Fig No.	1	1	1	1	1	1	1	1	2	2	2	3	3	2	3	3	Fig. No.	3	3, 4	

*For ø D=10, H=20.0 ± 0.5 is available, in this case, the dimensions of H is not specified.

Packaging

Figure 5 Ammo pack box

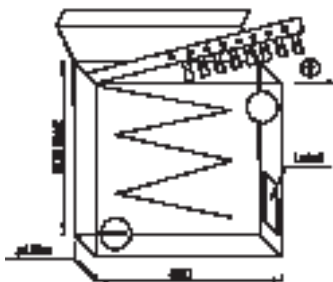
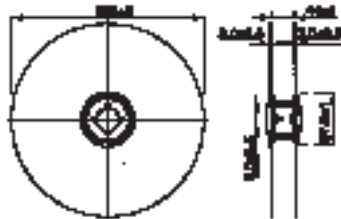


Figure 6 Reel pack box



Packaging Quantity

øD	3	4	5	6.3	8	10	13
TA, SA	3000	2000	2000	2000	1000	500	500
TR, SR	3000	1500	1200	1000	800	500	500

Note 1) Above quantities are principle. Some difference may be provided.

Note 2) The component shall be oriented on the tape as such that the positive lead is leading or the negative lead is leading with customer's request.